



LAKEVIEW VILLAGE



MISSISSAUGA'S NEW WATERFRONT VILLAGE

Set on 177 acres of coveted land along the Mississauga waterfront, Lakeview Village will be a model for sustainable mixed-use development. Ultimately, it will connect the people of Mississauga and beyond to the waterfront.

8,050

NEW
HOMES

20,000

APPROXIMATELY
NEW RESIDENTS

9,000

NEW EMPLOYMENT
OPPORTUNITIES

1.8M

SQ. FT. OF OFFICE,
INNOVATION & EMPLOYMENT

200,000

SQ. FT. OF
RETAIL SPACE

12

ACRES OF CAMPUS
& CULTURAL LANDS



THE DYNAMIC DISTRICTS OF LAKEVIEW VILLAGE

- 1. WATERFRONT PARK
- 2. THE MARINA
- 3. LAKEVIEW SQUARE
- 4. LAKEVIEW GATEWAY
- 5. OGDEN PARK
- 6. AVIATOR GREEN
- 7. WATERWAY COMMON
- 8. INNOVATION DISTRICT

▶ NIAGARA FALLS
90 MINS

TORONTO ▶
30 MINS

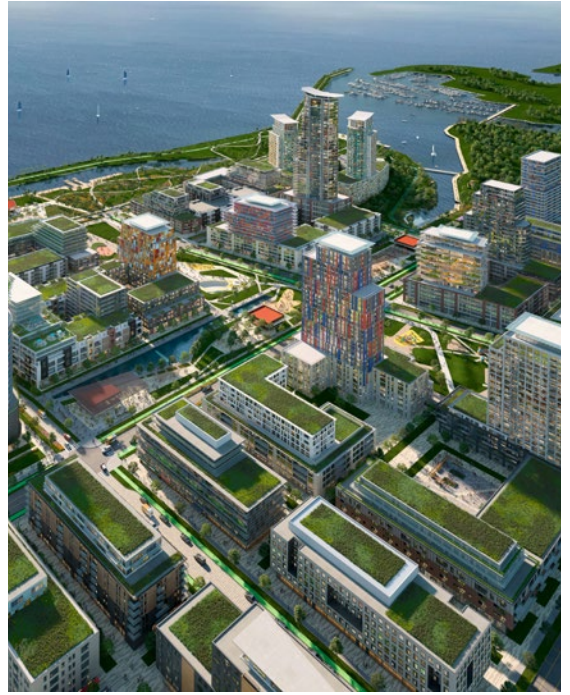


1 WATERFRONT PARK

On the Waterfront Park, residents and visitors alike discover a brilliantly designed waterfront connected to the longest pier on The Great Lakes. This is a destination offering unparalleled 360° views of the water and Toronto skyline, an iconic lighthouse pavilion (or marquee) and unique seating to take in the incredible lake views. Enjoy bountiful space for water sports, swimming, cycling, relaxing, taking in a concert, watching fireworks, exploring outdoor markets, and learning about the surrounding natural habitats.

THE SPOTS

- REVITALIZED PIER WITH FOOD POP-UPS, ART WALKS, AND VIEWS OF THE LAKE
- URBAN BEACH
- ART WALKS
- PICNIC SPOTS
- CANOE/KAYAK/SUP LAUNCH AND RENTAL
- FOOD POP-UPS
- CIVIC/CULTURAL CENTRE
- WATERFRONT TRAIL LINK
- STEPS FOR SOCIALIZING
- LEASH-FREE DOG AREA
- OUTDOOR CONCERT & EVENT PERFORMANCE SPACE



2 THE MARINA

Whatever activity you're in the mood for, you'll find it in the Marina District on the western edge of the Cultural Waterfront. Simply walk out your door and head down to the kayak launch for a paddle any time. Have a leisurely lunch at one of the many picnic spots, or go for a jog along The Waterfront Trail, which seamlessly links to the neighbouring conservation area and the Serson Creek nature trail.

THE SPOTS

- PANORAMIC LAKE VIEWS
- UNPARALLELED ARCHITECTURAL DESIGN
- WATERFRONT PARK AT DOORSTEP
- DIRECT ACCESS TO LAKEFRONT PROMENADE PARK AND FUTURE BOARDWALK
- PEDESTRIAN AND BIKE TRAILS
- DESTINATION RESTAURANT AND UNIQUE RETAIL
- PICNIC SPOTS
- SMALL CRAFT BOAT MARINA



3

LAKEVIEW SQUARE

A vibrant destination, Lakeview Square is the heart of the Village. Flanked by residences, restaurants, shops, an arts and culture centre, and outdoor concert space. The Square enables Residents and visitors to gather, explore, enjoy and experience year-round events and activities – all within steps of trails, parks and the water.

THE SPOTS

- PAVILLIONS & CANOPIES
- FARMERS' MARKETS
- OUTDOOR DINING
- GATHERING SPACES
- RESIDENTIAL BUILDINGS
- CURATED DINING, SHOPS AND SERVICES
- MARKETS, FESTIVALS AND POP-UPS
- ARTS AND CULTURE CENTRE
- CREATIVE PLACE MAKING/ PUBLIC ART
- BREWERY
- OUTDOOR PATIOS AND ROOFTOP TERRACES
- OUTDOOR CONCERT AND EVENT SPACE
- DIRECT LINK TO MAJOR PARKS
- ADJACENT TO THE INNOVATION DISTRICT



4

LAKEVIEW GATEWAY

Beginning at the intersection of Lakeshore Road and Hydro Road, this stretch of mixed-uses, including commercial, residential mid-rise housing blocks and green space is defines the entryway to the Lakeview Village, with an emphasis on pedestrian, cycling and transit linkages. As you travel south within the expansive urban boulevard, you can see the lake in all its sparkling glory, enticing you to continue down to the bustling Village heart.

THE SPOTS

- ACTIVE TRANSPORTATION NETWORK
- MID-RISE RESIDENTIAL
- NEIGHBOURHOOD PARK SPACE
- VIEWS OF LAKE ONTARIO
- GROCERY STORE
- RETAIL AMENITIES
- CHARACTER AVENUE AND PROMENADE
- PUBLIC TRANSIT LINK
- MIXED-USE BUILDINGS



5

OGDEN PARK

Inspired by the iconic river corridors in the Greater Toronto Area, Ogden Park is a central 'river of green' that runs through the middle of Lakeview Village. Bordered by attractive residential architecture, pedestrian walkways link residents and visitors to the waterfront through a variety of unique outdoor spaces. There's something for everyone: for playing, getting together, taking your dog for a walk, and much more!

THE SPOTS

- DESTINATION PLAYGROUND/
SPLASHPAD
- PLAY COURTS
- OUTDOOR FITNESS
- OFF-LEASH DOG RUN
- MIXED-USE PAVILION
- URBAN STAGE
- SKATEBOARD FACILITY
- MULTI-USE TRAILS



6

AVIATOR GREEN

Located in the northwest area of Lakeview Village, Aviator Green is a landscaped Greenway that offers residents a pleasant way to travel on foot or bike east and west, from Lakefront Promenade to the Innovation Corridor. Conveniently, the Village's school faces out onto Aviator Park, amid attractively designed low-rise residences.

THE SPOTS

- ELEMENTARY SCHOOL
- LANDSCAPED GREEN
CORRIDOR
- TOWNHOMES
- LOW RISE CONDOMINIUMS
- WALKING/CYCLING PATHWAYS



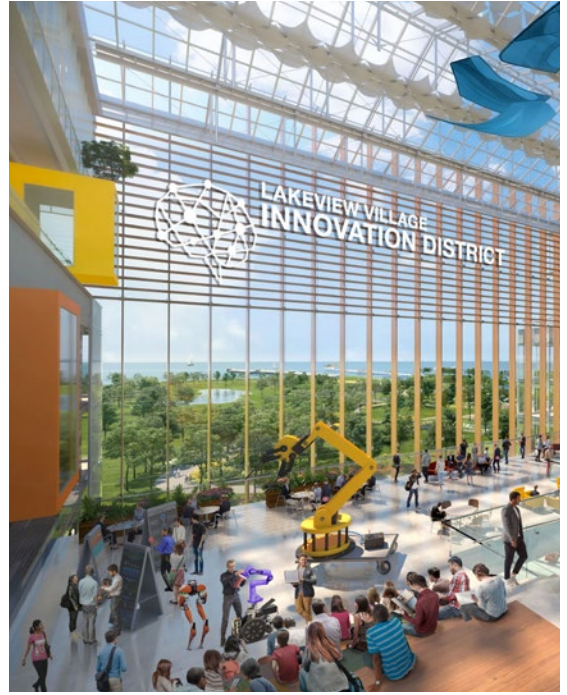
7

WATERWAY COMMON

This exceptional gathering space has two sides to its personality: In the winter, Waterway Common will be a skating trail that meanders through the winter landscape. In the summer, a series of scenic water features that flows towards the lake. From vibrant seasonal markets, an outdoor café to areas of quiet reprieve amongst the flowering ornamental trees, Waterway Common will be a truly unique urban experience.

THE SPOTS

- SKATING TRAIL
- AUTONOMOUS VEHICLE SHUTTLE ROUTE
- WATER FEATURES
- PEDESTRIAN PROMENADE
- PLAYGROUND
- WATERWAY PROMENADE
- PUBLIC ART
- OUTDOOR RESTAURANTS
- RETAIL POP UP EXPERIENCE
- REFLECTION POOL AND FOUNTAIN
- MULTI-USE PARK PAVILION
- CAFÉ WITH OUTDOOR SEATING



8

INNOVATION DISTRICT

The Innovation District is set to become the largest hub for innovation and research in Canada, attracting leading tech and multinational companies. This 20-acre campus will deliver up to 9,000 long-term jobs and provide access to flexible office space, a conference centre, an Innovation Hub, Sustainability Centre and hotel. Connected to Lakeview Square and the waterfront, the district will be close to recreation, nature, restaurants, housing and transit.

THE SPOTS

- 1.8 MILLION SQ.FT OFFICE SPACE
- CONFERENCE CENTRE
- HOTEL
- FLEXIBLE WORK SPACE
- SUSTAINABILITY CENTRE
- INNOVATION CAMPUS
- COURTYARDS
- LAKE VIEWS
- SERSON CREEK TRAIL ACCESS

BRANTHAVEN

Branthaven is a family-owned company celebrating 50 years of homebuilding excellence. Founded in Burlington in 1971, Branthaven is committed to re-imagining the new home industry with design-forward, high quality homes that offer an exceptional lifestyle to those who live in them and enhanced value to the communities in which they belong.

CAIVAN

Caivan is a fully integrated land development and homebuilding company with over 45 active communities across Ontario. Our curiosity for what makes our favorite places special drives us and our creative process. We take our role in the life cycle of neighborhoods and the people that enjoy them seriously – because where people live directly affects who they are and how they live our lives. At Caivan, our core belief is that our communities have the capacity to positively impact the people that call our neighborhoods home. We are dedicated to shaping purpose-built places around the lives of the thousands of current and future Caivan homeowners.



Since 1967, nearly 80,000 families have chosen Greenpark Group for their most important investment. That's more than just a number – it is a statement of trust from each of those homebuyers who have chosen Greenpark to deliver the quality home they demand, and the quality lifestyle they desire. They are the complete home builder, offering a full range of new home designs from towns, semis and singles to high-rise condominium residences all across the GTA.

DECO

An Award-Winning Builder, DECO understands the art of home building is in every detail. As a generational builder of design forward communities throughout Ontario, their forward-thinking approach to architecture, smart design, quality craftsmanship and environmentally sustainable practices is the foundation for everything they do. As part of the TACC Group of Companies, it is these principles which ensure they continue to build communities families will enjoy for a lifetime.



Since 2011, OPUS is proud of the reputation they have built and most recently being named Home Builder of the Year by BILD. Offering elevated Signature Finishes™ that can be seen across their communities, each home features the refinement families deserve. Caring for the environment is evident in their Go Green™ initiatives and in the communities they build through their Families Helping Families Program. At OPUS Homes, the team brings exceptional homes to life through their passion...That's Living Refined™.



With more than 87,000 new homes built throughout the GTA over the last eight decades, Tridel is one of the largest builders of sustainable condominiums in Canada – and the most distinguished. Thanks to their strong corporate culture that fosters a spirit of community and commitment to their renowned craftsmanship, they have been the most awarded developer in Ontario, including receiving awards for Home Builder Of The Year, Green Builder Of The Year, Best High-Rise Building Design, Best Customer Care, and the Diversity, Equity and Inclusion Award.